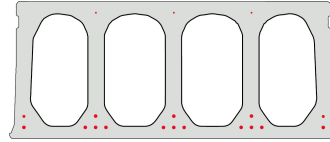


# FS500-1200

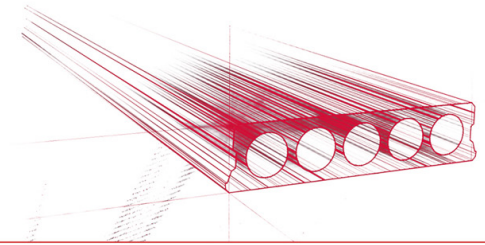


## Technische Infos

Höhe (Dicke)	500
Breite	1200
Feuerwiderstand	1 Stunde (2 Stunden auf Anfrage)
Expositionsklasse	XC1, XC2, XC3 (andere auf Anfrage)
Transportgewicht	5,50 kN/m <sup>2</sup>
Gewicht /m	6,60 kN/m
Bemessungsgewicht	5,96 kN/m <sup>2</sup> (inklusive Füllbeton)
Hohlraumfüllung	83,37 l/m
Füllbeton	18,80 l/m <sup>2</sup>
Betongüte	C 50/60
Stahlqualität	f(pk) 1860; f(p0,1k) 1580

## Keurmerken





## Spannweiten

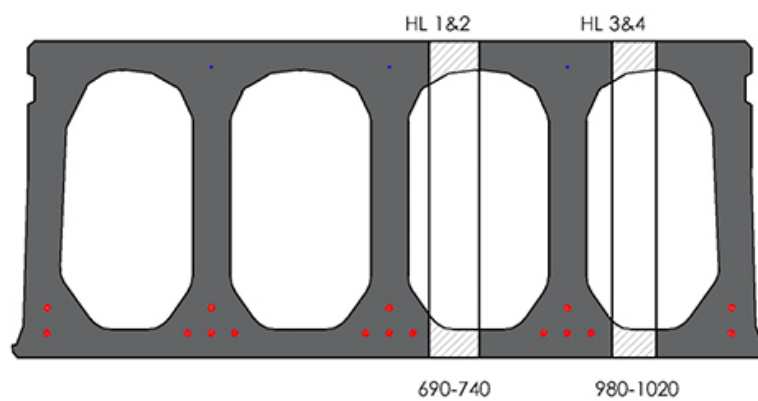
---

Zie hiervoor onze online rekenmodule



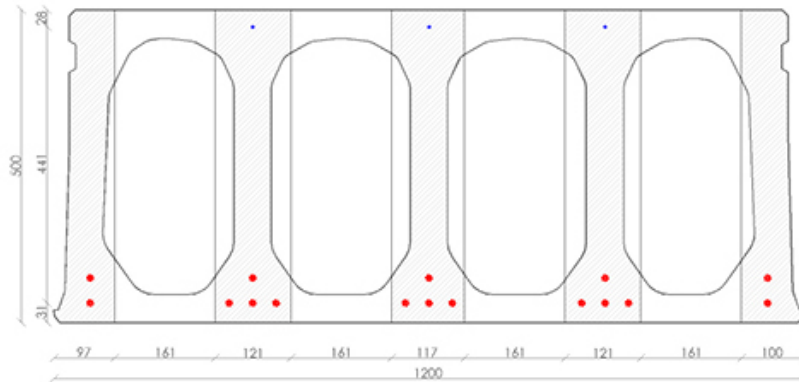
## Passplatten

---

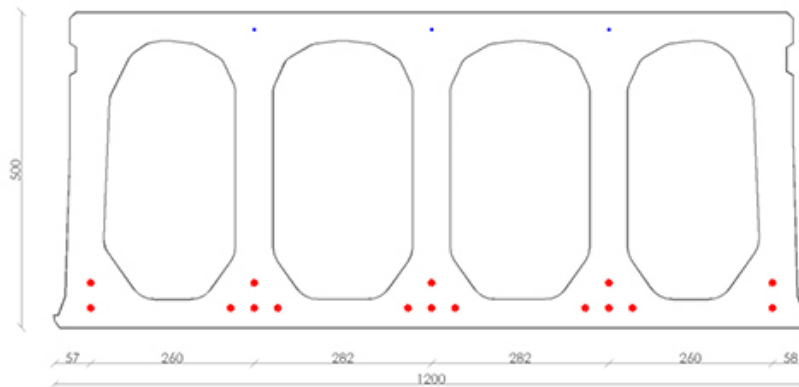


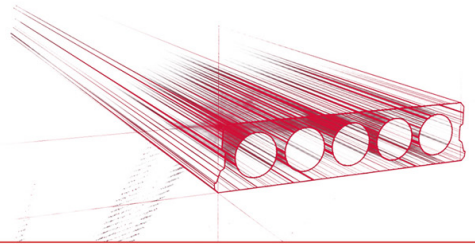


## Bohrvorschriften

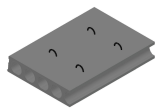


## Bewehrungspositionen

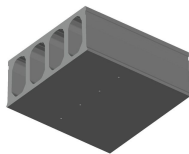




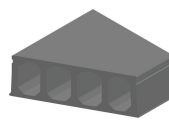
## Zubehör



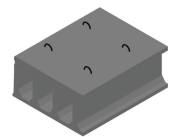
Passplatten -  
Spannbeton-Hohlplatte



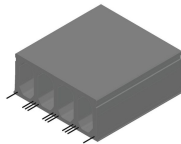
Entwässerungsöffnungen



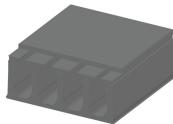
Schrägschnitte



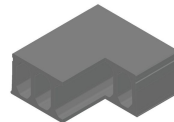
Hubschlaufen



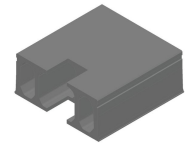
Ausstehende Bewehrung



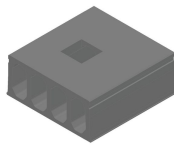
Verjüngte Oberseite



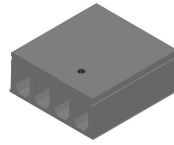
Eckausparungen



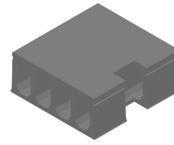
Kopfausparung



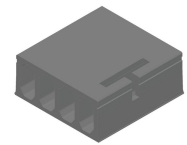
Mittelausparung



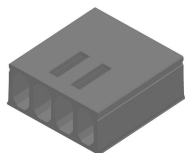
Rundausparung + E-  
Dose



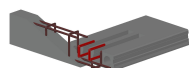
Randausparung



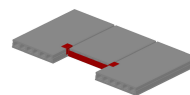
Ausnehmungen zur  
Plattenkopplung



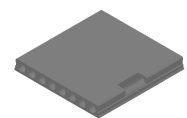
Geöffnete Hohlkammern



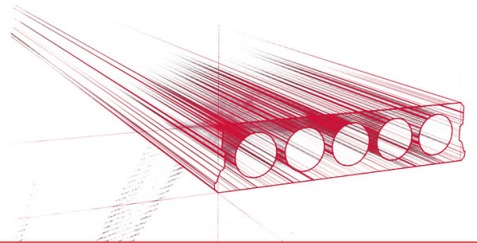
Open kanalen met  
inhangwapening



Wechseleisen  
Spannbeton-Hohlplatten



Vertiefte Ausparungen



## Vorrat

	Produktion	Abnehmbar	Vorrätig
Malle 1			
Malle 2			
Frederickx			
Tessenderlo	X	X	

