



FD200-1200-6C

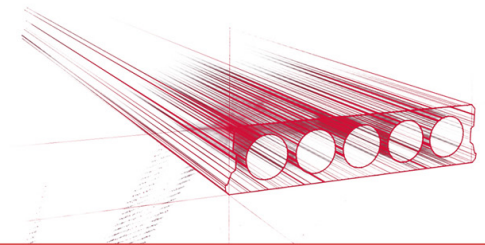


Technische Infos

Höhe (Dicke)	200mm
Breite	1200mm
Feuerwiderstand	1 Stunde (2 Stunden auf Bestellung)
Expositionsklasse	XC1, XC2, XC3 (andere auf Anfrage)
Transportgewicht	3,35 kN/m ²
Gewicht /m	4,02 kN/m
Bemessungsgewicht	3,49 kN/m ² (inklusive Füllbeton)
Hohlraumfüllung	12,78 l/m ²
Füllbeton	5,7 l/m ²
Betongüte	C 50/60
Stahlqualität	f(pk) 1860

Keurmerken



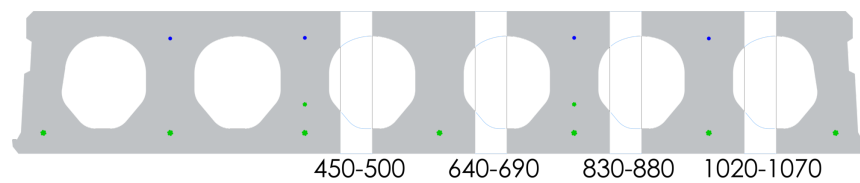


Spannweiten

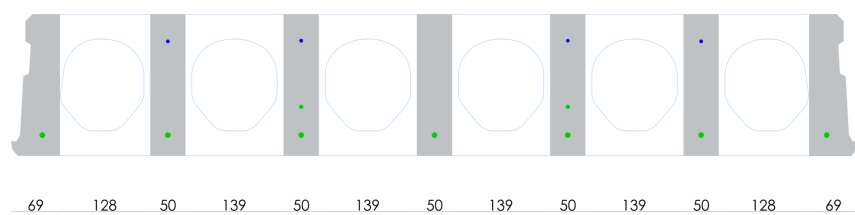
Zie hiervoor onze online rekenmodule

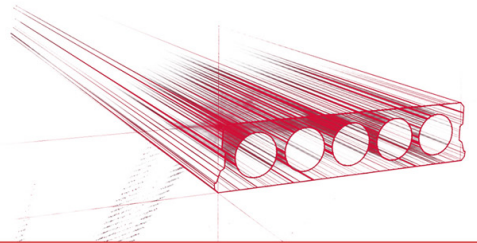


Passplatten

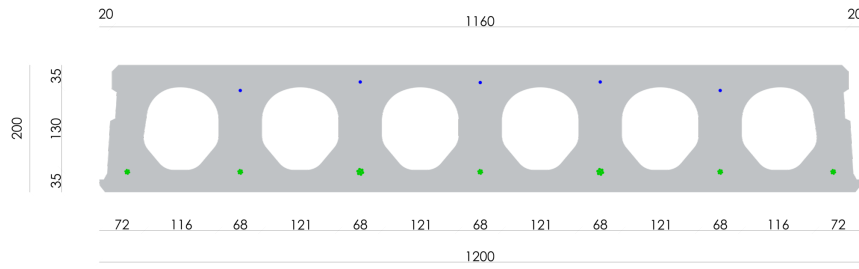


Bohrvorschriften





Bewehrungspositionen

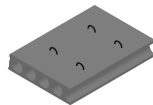




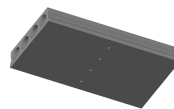
Zubehör



Koppelsparung
(hamerkop)



Passplatten -
Spannbeton-Hohlplatte



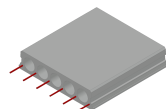
Entwässerungsöffnungen



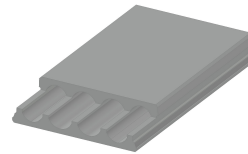
Schrägschnitte



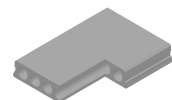
Hubschlaufen



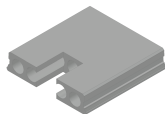
Ausstehende Bewehrung



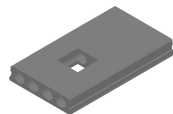
Verjüngte Oberseite



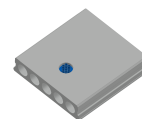
Eckausparungen



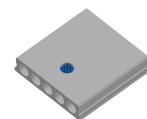
Kopfausparung



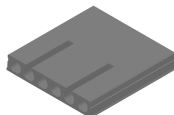
Mittelausparung



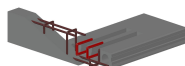
Rundausparung



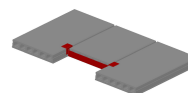
Rundausparung + E-
Dose



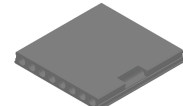
Geöffnete Hohlkammern



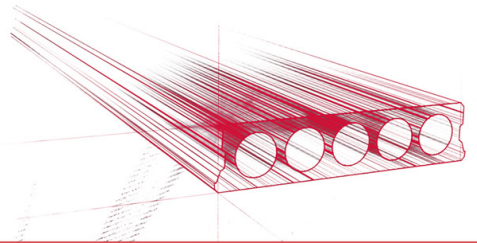
Open kanalen met
inhangwapening



Wechseleisen
Spannbeton-Hohlplatten



Vertiefte Ausparungen



Vorrat

	Produktion	Abnehmbar	Vorrätig
Malle 1			
Malle 2			
Frederickx			
Tessenderlo	X	X	

