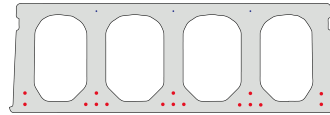


# FD400-1200-4C

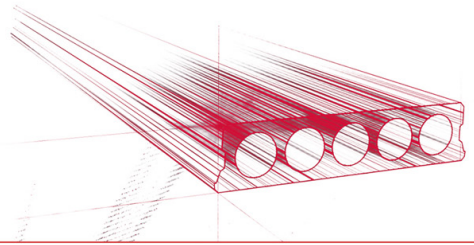


## Technische Infos

|                   |  |
|-------------------|--|
| Höhe (Dicke)      | 400mm  |
| Breite            | 1200mm                                       |
| Feuerwiderstand   | 1 Stunde (2 Stunde auf Anfrage)              |
| Expositionsklasse | XC1; XC2; XC3 (andere auf Anfrage)           |
| Transportgewicht  | 4,85 kN/m <sup>2</sup>                       |
| Gewicht /m        | 5,82 kN/m                                    |
| Bemessungsgewicht | 5,19 kN/m <sup>2</sup> (inklusive Füllbeton) |
| Hohlraumfüllung   | 61,76 l/m                                    |
| Füllbeton         | 13,60 l/m <sup>2</sup>                       |
| Betongüte         | C 50/60                                      |
| Stahlqualität     | f(pk) 1860                                   |

## Keurmerken





## Spannweiten

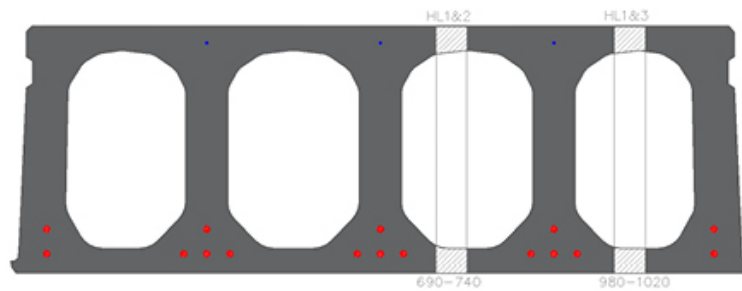
---

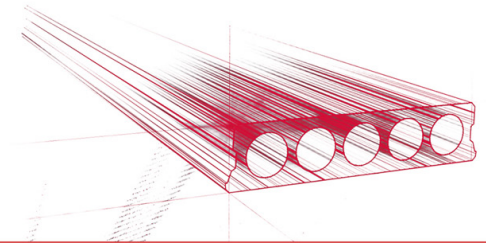
Zie hiervoor onze online rekenmodule



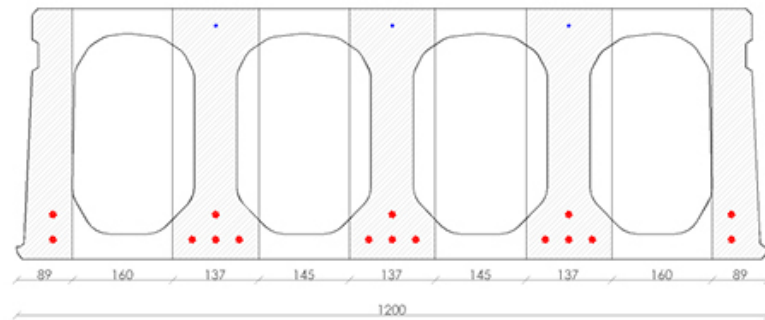
## Passplatten

---

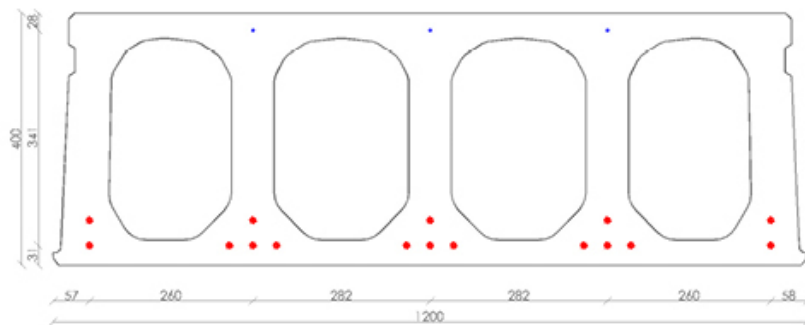




## Bohrvorschriften

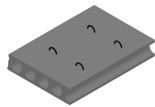


## Bewehrungspositionen

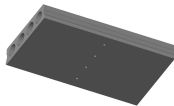




## Zubehör



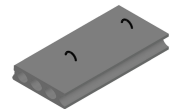
Passplatten -  
Spannbeton-Hohlplatte



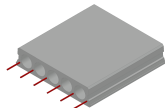
Entwässerungsöffnungen



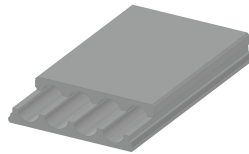
Schrägschnitte



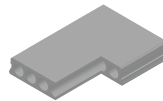
Hubschlaufen



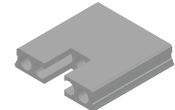
Ausstehende Bewehrung



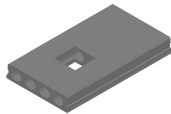
Verjüngte Oberseite



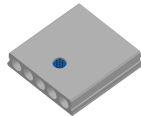
Eckausparungen



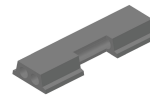
Kopfausparung



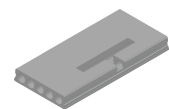
Mittelausparung



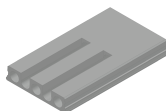
Rundausparung + E-  
Dose



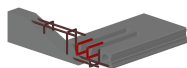
Randausparung



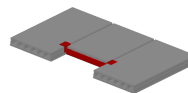
Ausnehmungen zur  
Plattenkopplung



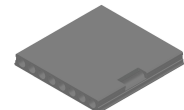
Geöffnete Hohlkammern



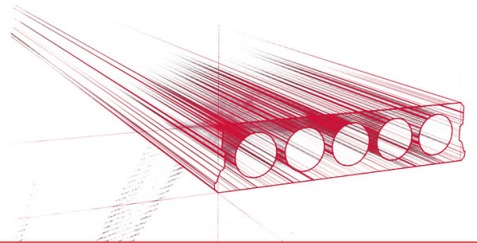
Open kanalen met  
inhangwapening



Wechseleisen  
Spannbeton-Hohlplatten



Vertiefte Ausparungen



## Vorrat

|             | Produktion | Abnehmbar | Vorrätig |
|-------------|------------|-----------|----------|
| Malle 1     |            |           |          |
| Malle 2     |            |           |          |
| Frederickx  |            |           |          |
| Tessenderlo | X          | X         |          |

