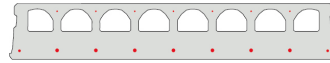


FL200-1200



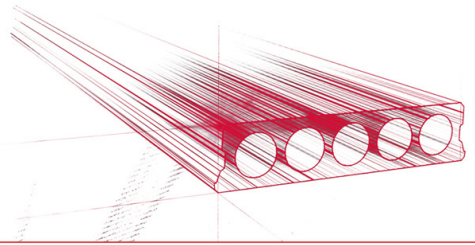
Technische Infos

Höhe (Dicke)	200mm
Breite	1200mm
Feuerwiderstand	1 Stunde (andere auf Anfrage)
Expositionsklasse	XC1 ; XC2; XC3 (andere auf Anfrage)
Transportgewicht	3,59 kN/m ²
Gewicht /m	4,31 kN/m
Bemessungsgewicht	3,73 kN/m ² (inklusive Füllbeton)
Hohlraumfüllung	8,0 l/m
Füllbeton	5,7 l/m ²
Betongüte	C40/50
Stahlqualität	f(pk)1860

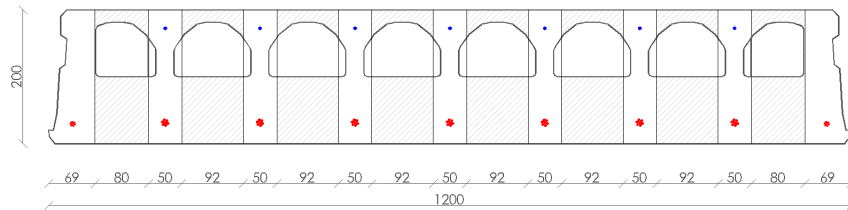
Spannweiten

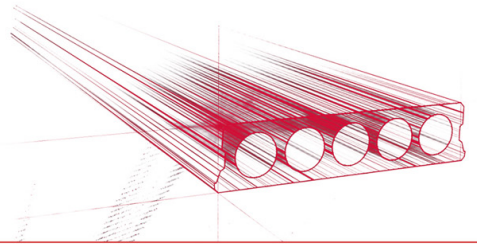
Zie hiervoor onze online rekenmodule



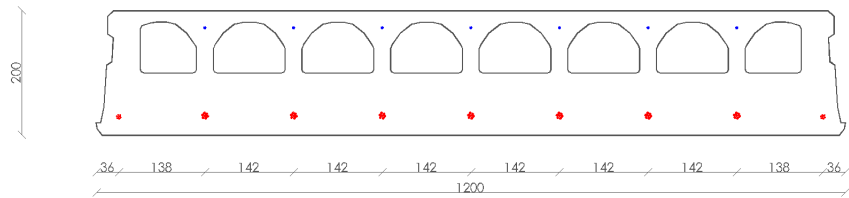


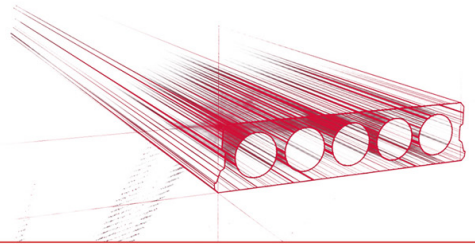
Bohrvorschriften





Bewehrungspositionen

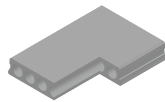




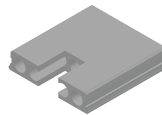
Zubehör



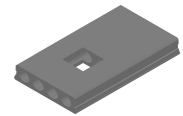
Schrägschnitte



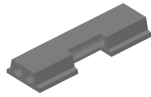
Eckausparungen



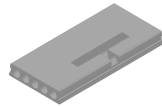
Kopfausparung



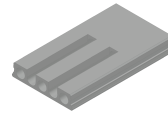
Mittelausparung



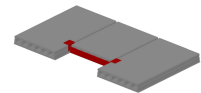
Randausparung



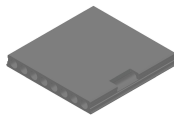
Ausnehmungen zur
Plattenkopplung



Geöffnete Hohlkammern



Wechseleisen
Spannbeton-Hohlplatten



Vertiefte Ausparungen



Vorrat

	Produktion	Abnehmbar	Vorrätig
Malle 1			
Malle 2			
Frederickx			
Tessenderlo	X	X	

