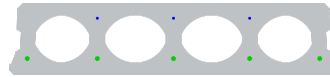


FS130-600



Technische Infos

Höhe (Dicke)	130mm
Breite	596mm
Länge	Wap. S500: 2,00m => 2,50m uit voorraad (per 10cm oplopend) Wap. S500: 2,55m => 5,95m uit voorraad (per 5 cm oplopend) Wap. S500: 6,00m => 6,50m uit voorraad (per 10cm oplopend)
Feuerwiderstand	1 uur
Expositionsklasse	XC1, XC2, XC3 (andere op bestelling)
Transportgewicht	1,92 kN/m ²
Gewicht /m	1,15 kN/m
Bemessungsgewicht	2,06 kN/m ² (incl. voegvulling)
Hohlraumfüllung	7,18 l/m
Füllbeton	5,8 l/m ²
Betongüte	C 50/60
Stahlqualität	f(pk) 1860 vanaf 6,00 m

Keurmerken



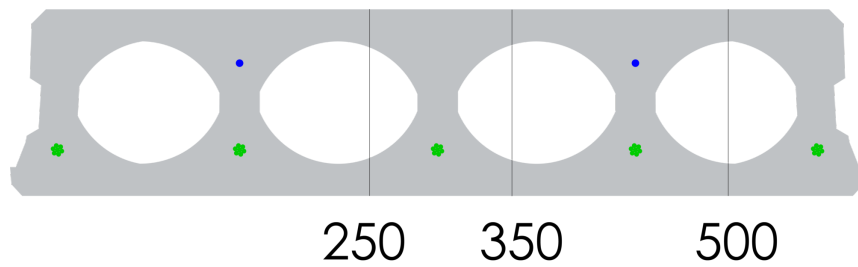


Spannweiten

Zie hiervoor onze online rekenmodule

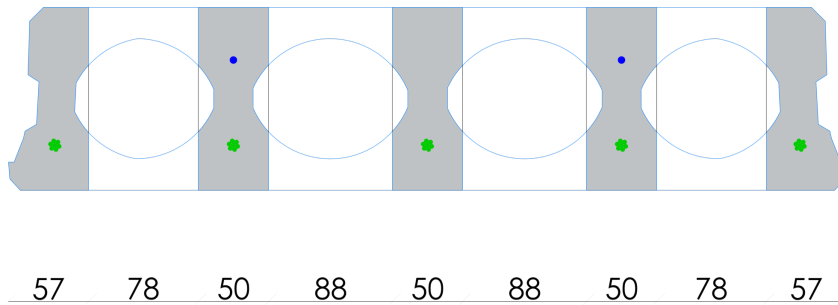


Passplatten

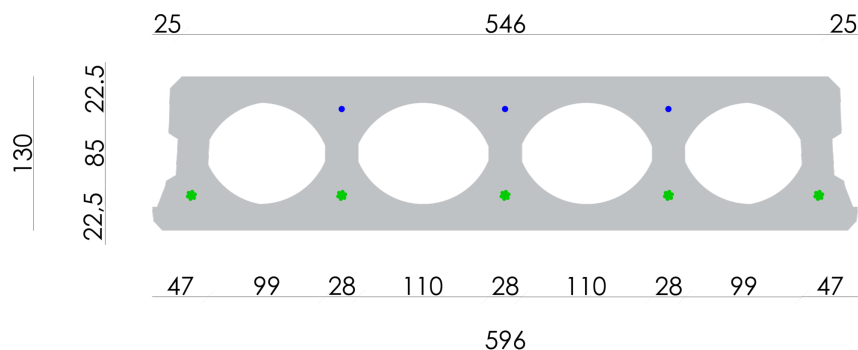


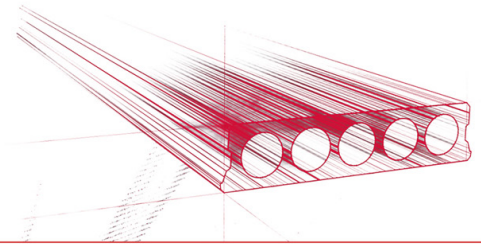


Bohrvorschriften

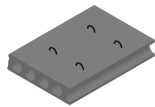


Bewehrungspositionen

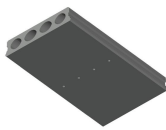




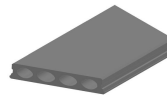
Zubehör



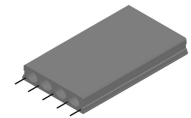
Passplatten -
Spannbeton-Hohlplatte



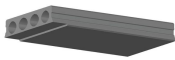
Entwässerungsöffnungen



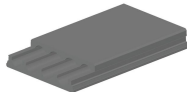
Schrägschnitte



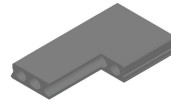
Ausstehende Bewehrung



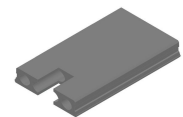
Verjüngte Unterseite



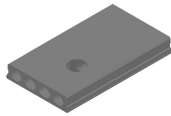
Verjüngte Oberseite



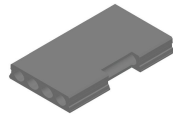
Eckausparungen



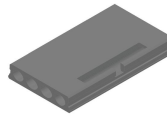
Kopfausparung



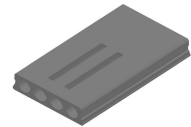
Rundaussparung



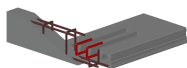
Randaussparung



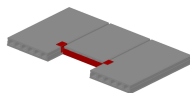
Ausnehmungen zur
Plattenkopplung



Geöffnete Hohlkammern



Open kanalen met
inhangwapening



Wechseleisen
Spannbeton-Hohlplatten



Vorrat

	Produktion	Abnehmbar	Vorrätig
Malle 1			
Malle 2			
Frederickx		X	X
Tessenderlo	X	X	X

