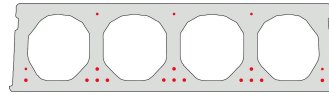


# FS320-1200

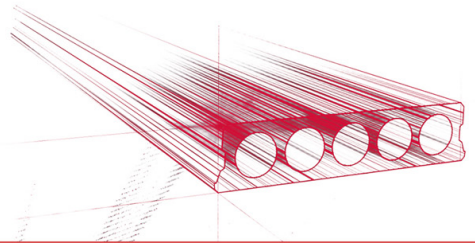


## Technische Infos

Höhe (Dicke)	320mm
Breite	1200mm
Feuerwiderstand	1 Stunde (2 Stunden auf Anfrage)
Expositionsklasse	XC1, XC2, XC3 (andere auf Anfrage)
Transportgewicht	3,78 kN/m <sup>2</sup>
Gewicht /m	4,54 kN/m
Bemessungsgewicht	4,04 kN/m <sup>2</sup> (inklusive Füllbeton)
Hohlraumfüllung	46,66 l/m
Füllbeton	10,3 l/m <sup>2</sup>
Betongüte	C 50/60
Stahlqualität	f(pk) 1860

## Keurmerken





## Spannweiten

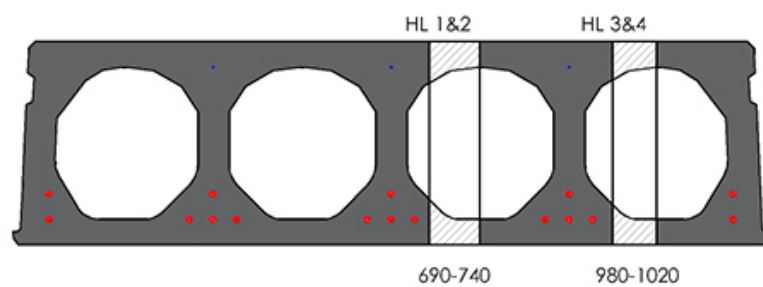
---

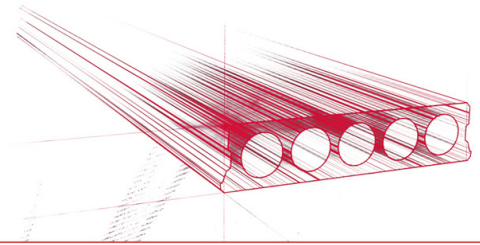
Zie hiervoor onze online rekenmodule



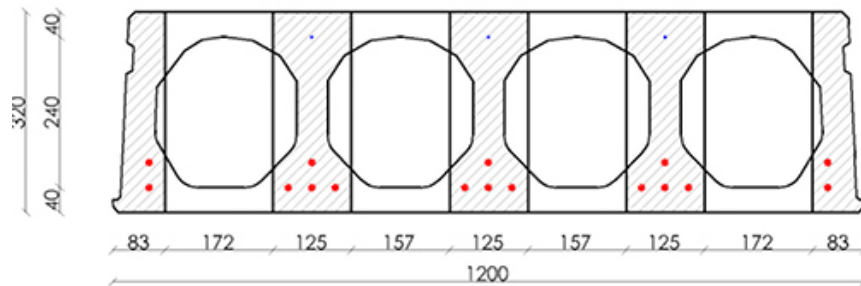
## Passplatten

---

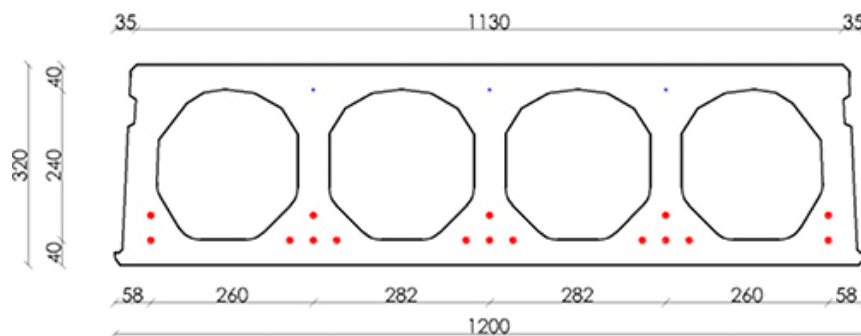




## Bohrvorschriften

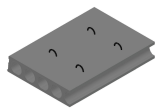


## Bewehrungspositionen

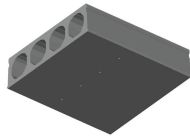




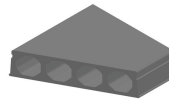
## Zubehör



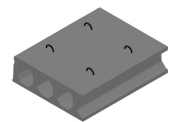
Passplatten -  
Spannbeton-Hohlplatte



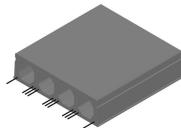
Entwässerungsöffnungen



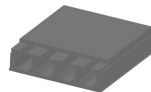
Schrägschnitte



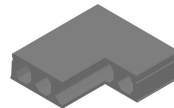
Hubschlaufen



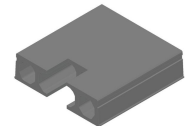
Ausstehende Bewehrung



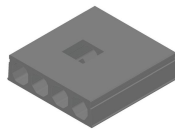
Verjüngte Oberseite



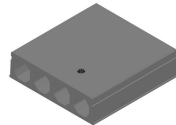
Eckaussparungen



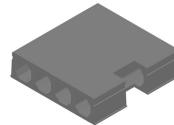
Kopfaussparung



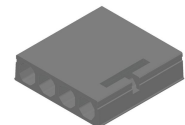
Mittelaussparung



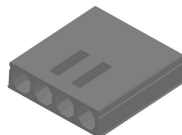
Rundaussparung + E-  
Dose



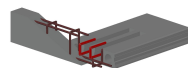
Randaussparung



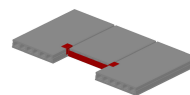
Ausnehmungen zur  
Plattenkopplung



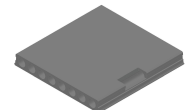
Geöffnete Hohlkammern



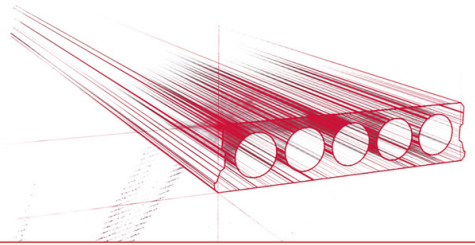
Open kanalen met  
inhangwapening



Wechseleisen  
Spannbeton-Hohlplatten



Vertiefte Aussparungen



## Vorrat

	Produktion	Abnehmbar	Vorrätig
Malle 1			
Malle 2	X	X	
Frederickx			
Tessenderlo	X	X	

