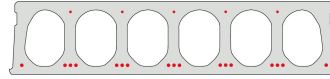


FS265-1200

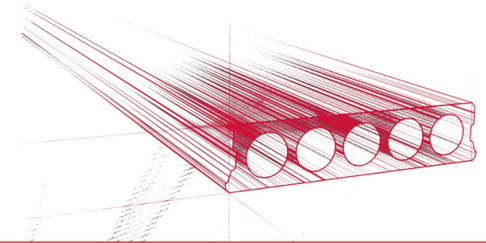


Technische Infos

Höhe (Dicke)	265mm
Breite	1200mm
Feuerwiderstand	1 Stunde (2 Stunden auf Anfrage)
Expositionsklasse	XC1, XC2, XC3 (andere auf Anfrage)
Transportgewicht	3,35 kN/m ²
Gewicht /m	4,02 kN/m
Bemessungsgewicht	3,55 kN/m ² (inklusive Füllbeton)
Hohlraumfüllung	26,15 l/m
Füllbeton	8,2l/m ²
Betongüte	C 50/60
Stahlqualität	f(pk) 1860; f(p0,1k) 1580

Keurmerken



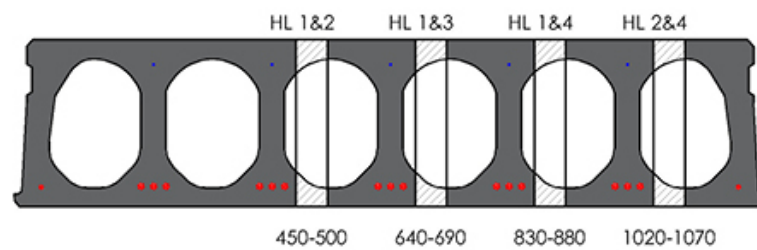


Spannweiten

Zie hiervoor onze online rekenmodule

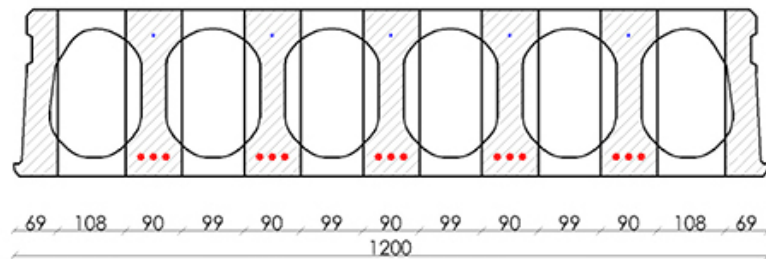


Passplatten

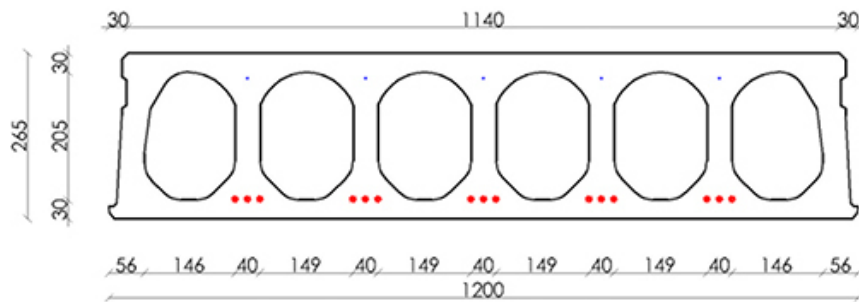




Bohrvorschriften

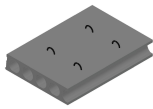


Bewehrungspositionen

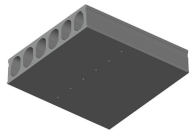




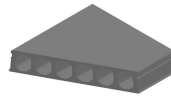
Zubehör



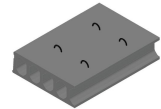
Passplatten -
Spannbeton-Hohlplatte



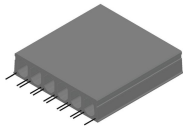
Entwässerungsöffnungen



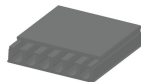
Schrägschnitte



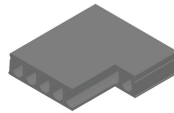
Hubschlaufen



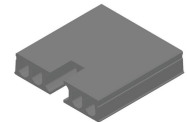
Ausstehende Bewehrung



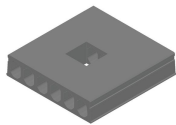
Verjüngte Oberseite



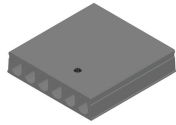
Eckausparungen



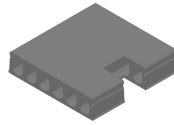
Kopfausparung



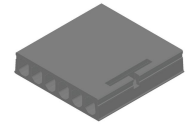
Mittelausparung



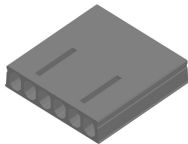
Rundausparung + E-
Dose



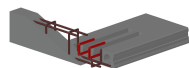
Randausparung



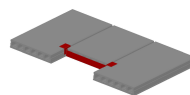
Ausnehmungen zur
Plattenkopplung



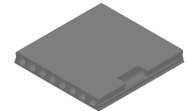
Geöffnete Hohlkammern



Open kanalen met
inhangwapening



Wechseleisen
Spannbeton-Hohlplatten



Vertiefte Ausparungen



Vorrat

	Produktion	Abnehmbar	Vorrätig
Malle 1			
Malle 2	X	X	
Frederickx			
Tessenderlo	X	X	

