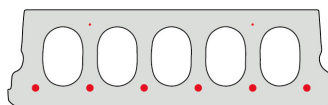


F170-600

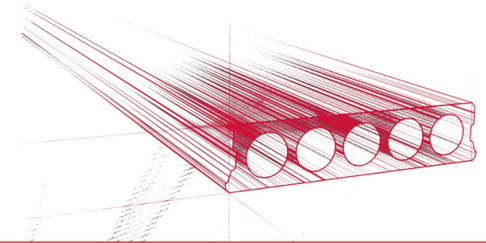


Technische Infos

Höhe (Dicke)	173mm
Breite	600mm
Länge	Wap. S350: 1,00m => 6,20m uit voorraad (per 10cm olopend) Wap. S700: 5,30m => 5,90m op bestelling (per 10cm olopend)
Feuerwiderstand	1 uur (2u op bestelling)
Expositionsklasse	XC1; XC2; XC3 (andere op bestelling)
Transportgewicht	2,70 kN/m ²
Gewicht /m	1,62 kN/m
Bemessungsgewicht	3,00 kN/m ² (incl. voegvulling)
Hohlraumfüllung	6,46 l/m
Füllbeton	10 l/m ²
Betongüte	C40/50

Keurmerken



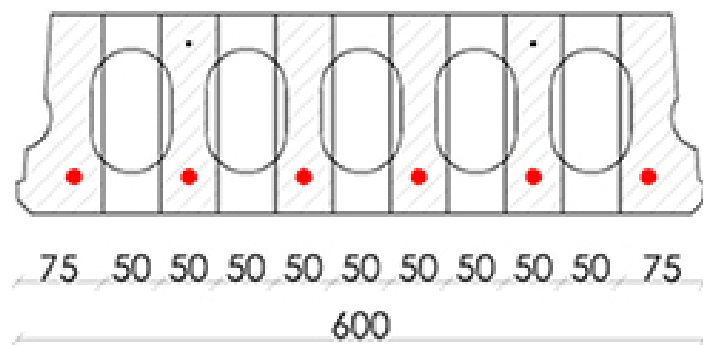


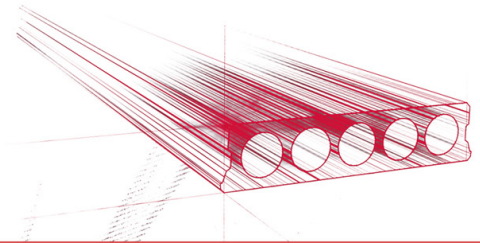
Spannweiten

Zie hiervoor onze online rekenmodule

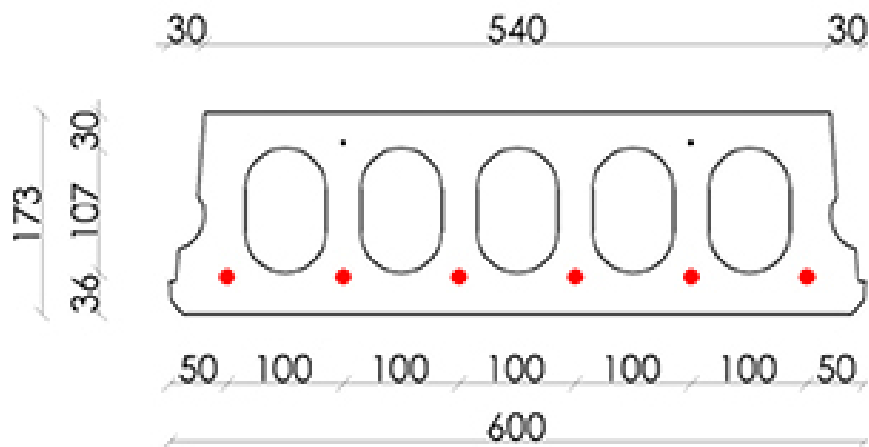


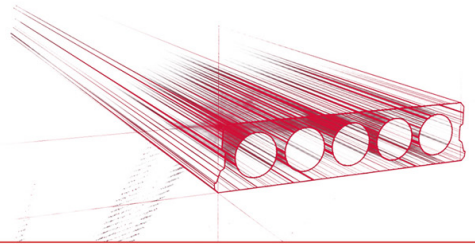
Bohrvorschriften



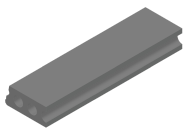


Bewehrungspositionen

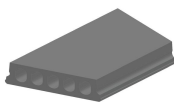




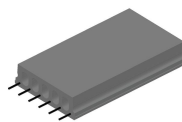
Zubehör



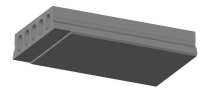
Passplatten - Stahlbeton-Hohlplatte



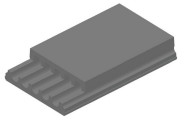
Schrägschnitte



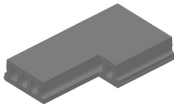
Ausstehende Bewehrung



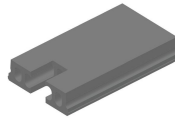
Verjüngte Unterseite



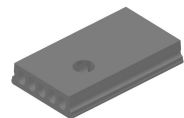
Verjüngte Oberseite



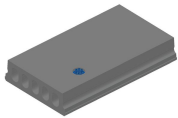
Eckaussparungen



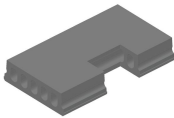
Kopfaussparung



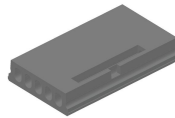
Rundaussparung



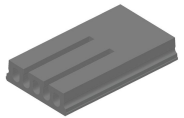
Rundaussparung + E-Dose



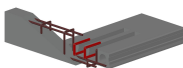
Randaussparung



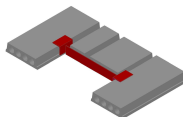
Ausnehmungen zur Plattenkopplung



Geöffnete Hohlkammern



Open kanalen met inhangwapening



Wechseleisen
Stahlbeton-Hohlplatten



Vorrat

	Produktion	Abnehmbar	Vorrätig
Malle 1	X	X	X
Malle 2			
Frederickx			
Tessengerlo			

