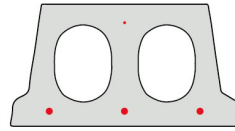


F170-330

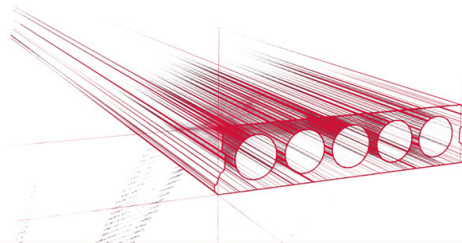


Technische Infos

Höhe (Dicke)	173mm
Breite	330mm
Länge	Wap. S350: 0,70m => 5,90m uit voorraad (per 10cm olopend) Wap. S700: 6,00m uit voorraad
Feuerwiderstand	1 uur (2u op bestelling)
Expositionsklasse	XC1
Transportgewicht	2,25 kN/m ²
Gewicht /m	0,74 kN/m
Bemessungsgewicht	3,00 kN/m ² (incl. voegvulling)
Hohlraumfüllung	7,43 l/m
Füllbeton	11 l/m ²
Betongüte	C40/50 vanaf 5,30 m

Keurmerken



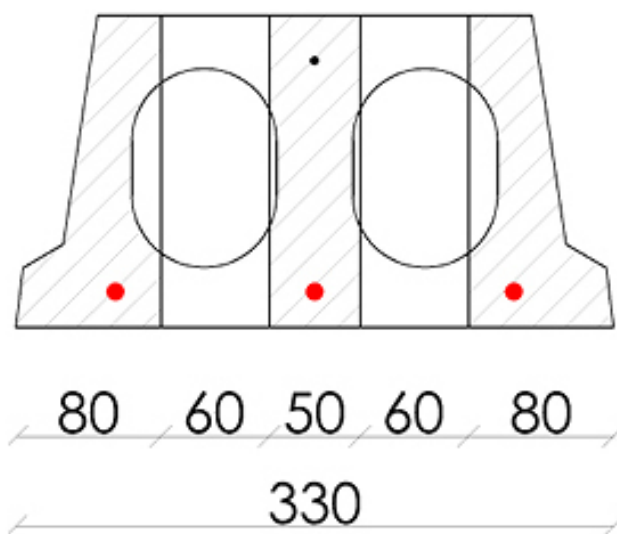


Spannweiten

Zie hiervoor onze online rekenmodule

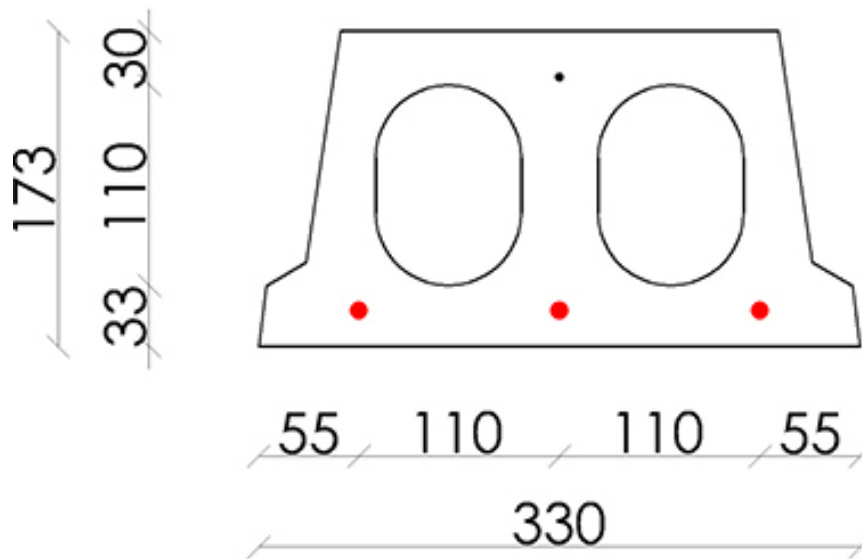


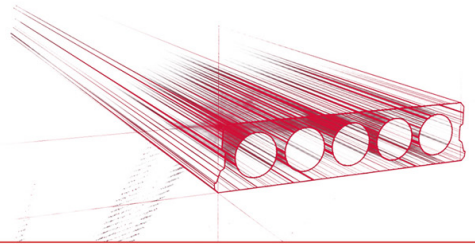
Bohrvorschriften



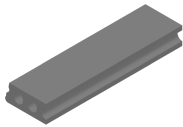


Bewehrungspositionen





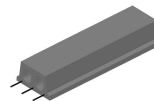
Zubehör



Passplatten - Stahlbeton-Hohlplatte



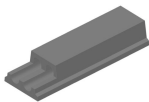
Schrägschnitte



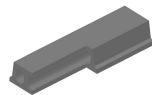
Ausstehende Bewehrung



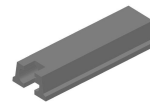
Verjüngte Unterseite



Verjüngte Oberseite



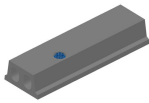
Eckaussparungen



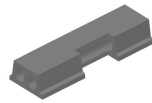
Kopfaussparung



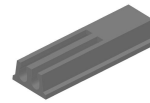
Rundaussparung



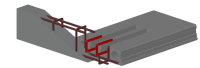
Rundaussparung + E-Dose



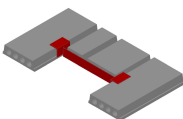
Randaussparung



Geöffnete Hohlkammern



Open kanalen met inhangwapening



Wechseleisen
Stahlbeton-Hohlplatten



Vorrat

	Produktion	Abnehmbar	Vorrätig
Malle 1	X	X	X
Malle 2			
Frederickx			
Tessengerlo			

