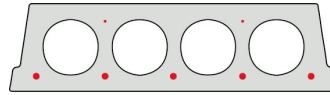


# F130-500

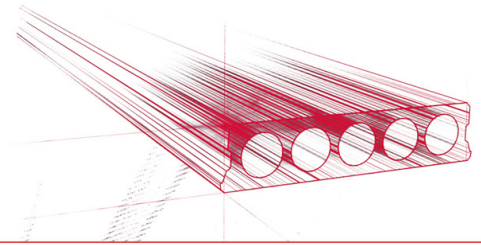


## Technische Infos

Höhe (Dicke)	130mm
Breite	500mm
Länge	Wap. S350: 0,70m => 5,40m uit voorraad (per 10cm olopend) Wap. S700: 1,90m => 5,40m uit voorraad (per 10cm olopend)
Feuerwiderstand	1 uur (2u op bestelling)
Expositionsklasse	XC1; XC2; XC3 (andere op bestelling)
Transportgewicht	1,77 kN/m <sup>2</sup>
Gewicht /m	0,89 kN/m
Bemessungsgewicht	2,10 kN/m <sup>2</sup> (incl. voegvulling)
Hohlraumfüllung	5,41 l/m
Füllbeton	9 l/m <sup>2</sup>
Betongüte	C 40/50
Stahlqualität	f(yk) 500; f(tk) 550

## Keurmerken





## Spannweiten

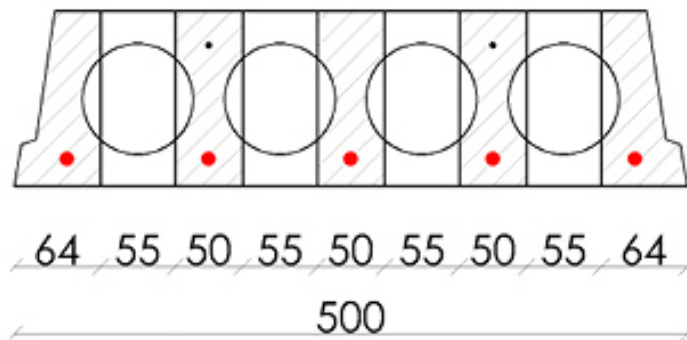
---

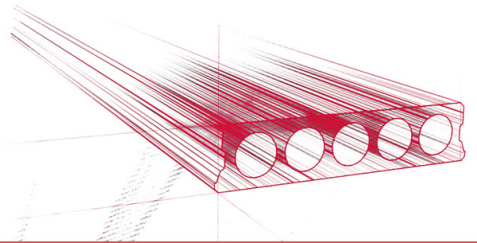
Zie hiervoor onze online rekenmodule



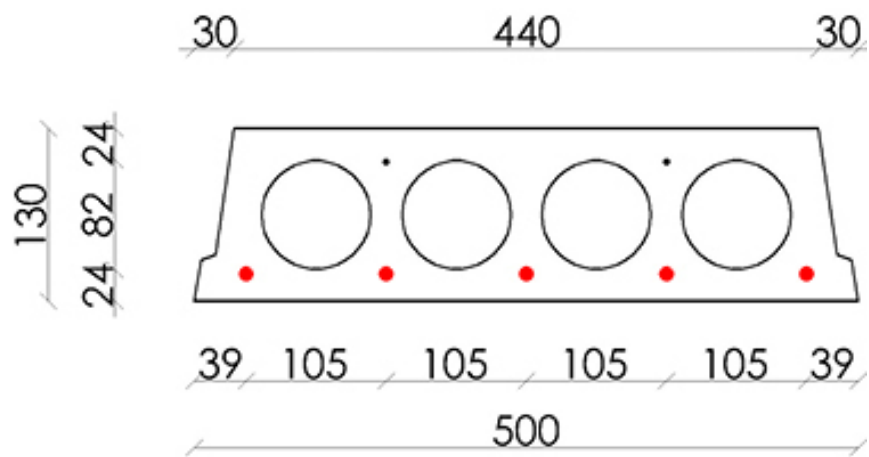
## Bohrvorschriften

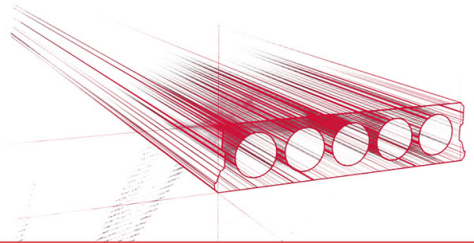
---



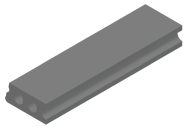


## Bewehrungspositionen

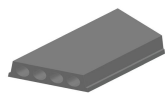




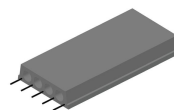
## Zubehör



Passplatten - Stahlbeton-Hohlplatte



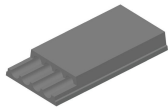
Schrägschnitte



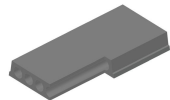
Ausstehende Bewehrung



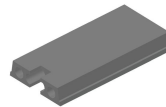
Verjüngte Unterseite



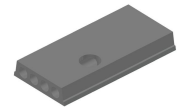
Verjüngte Oberseite



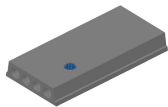
Eckaussparungen



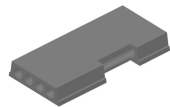
Kopfaussparung



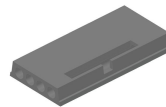
Rundaussparung



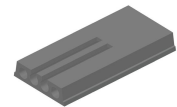
Rundaussparung + E-Dose



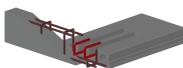
Randaussparung



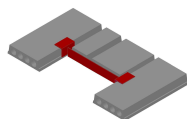
Ausnehmungen zur Plattenkopplung



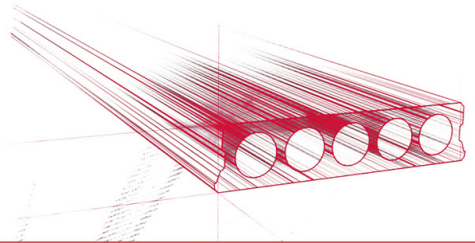
Geöffnete Hohlkammern



Open kanalen met inhangwapening



Wechseleisen Stahlbeton-Hohlplatten



## Vorrat

	Produktion	Abnehmbar	Vorrätig
Malle 1	X	X	X
Malle 2			
Frederickx			
Tessengerlo			

